

**UNIVERSITÄT
ERFURT**

Specializations in the MPP

October 10, 2024

Andreas Goldthau
Heike Grimm
Alejandra Ortiz-Ayala
Evans Tindana Awuni

CONTENT

General Overview of the Specializations

“International and Global Public Policy”

with Andreas Goldthau

“Non-Profit Management and Social Entrepreneurship”

with Heike Grimm

“Conflict Studies and Management”

with Alejandra Ortiz-Ayala

“Development and Socio-Economic Policies”

with Evans Tindana Awuni

Master of Public Policy Model Study Plan

| Semester | Modules and courses | | | | | | | CP |
|---------------|---|---|--|---|--|--|--|------|
| 1 (winter) | 101 IPP Introduction to Public Policy (9 CP) lecture (3 CP) tutorial (3 CP) examination (3 CP) | 102 EPA Economic Policy Analysis (6 CP) lecture (3 CP) examination (3 CP) | 103 PAF Public Administration and Finance (6 CP) lecture (3 CP) examination (3 CP) | | Language module*** e.g. Spr es B1.2 (6 CP) language course (6 CP)* examination | 60x SP xxx Specialization Module (9 CP) seminar (3 CP) | | 30 |
| 2 (summer) | 201 CPP Comparative and International Public Policy (6 CP) seminar (3 CP) examination (3 CP) | 202 QM Quantitative Methods (6 CP) lecture (3 CP) examination (3 CP) | 203 ML Management and Leadership (6 CP) lecture (3 CP) examination (3 CP) | 401 PT I Practical Training I (6 CP) internship with report (6 CP)** | | 60x SP xxx Specialization Module (9 CP) seminar (3 CP) examination (3 CP) | | 30** |
| 3 (winter) | | 301 AM Advanced Methods (6 CP) lecture (3 CP) examination (3 CP) | 302 EPS Ethics in the Public Sector (6 CP) seminar (3 CP) examination (3 CP) | | 402 PT II Practical Training II (9 CP) project group (6 CP) examination (3 CP) | | 60x SP xxx Specialization Module (9 CP) seminar (3 CP) examination (3 CP) | |
| 4 (summer) | 701 XX Final Module – Public Policy (30 CP) colloquium (3 CP) master thesis (27 CP) | | | | | | | 30 |

| |
|-----------------------|
| Mandatory |
| Practical Training |
| Language |
| Specialization |
| Thesis |

Elective Courses

Specialization Modules

- Out of the four specializations offered, you will need to have completed two at the end of your study period (i.e. at the end of your third semester)
- To complete a specialization, you need to visit (at least) two seminars (for 3 credits each; pass/fail) and do one module exam (for an additional 3 credits and a grade) in one of the courses visited.
- You are free to participate (for credits) or audit (without credits) additional courses with the instructor's permission. However, first and foremost be sure that you can handle the course work of your mandatory classes.
- It is not possible to substitute credits earned in one module for credits earned in another module.
- It is also not possible to re-take a module exam that you have already passed (with a grade of 4.0 or better).

Check the [Examination and Study Rules](#) for more detailed and legally binding information regarding the structure of the MPP program. For easy reference, an unofficial English translation of this document is also available.

Specializations in the MPP

- 'Customize' your MPP, adding onto your professional and academic background

- Identify and deepen core themes during your MPP
 - Combine with internship, thesis, (project group)
 - Papers and presentations in other classes
 - (method skills, languages)

Module exam

- Planned in 2nd and 3rd semester (cf. "Model Study Plan")
- Within one seminar that you visit in that term
- Decide/Register during course registration period (3rd and 4th lecture week)
- Examination usu. at the end/after lecture period (+ earlier preparation)
- Possible formats: (a) oral exam, (b) written assignment, (c) 30% oral, 70% written
- 3 CP = 90 hours additional to course work => high demand in substance& form
- A passed module examination (4.0 or better) means you cannot do an exam in the same module again(!)

Courses in Specializations

- Every semester, there will be different courses offered in every specialization.
- I cannot give reliable information if a course is offered again in future
- However, you can see whether a course was already offered in an earlier semester:
See Academic Schedule, asterisks marks */**/** (explanation slide 18)
- Course Catalogue on ELVIS website:
https://sulwww.uni-erfurt.de/PublicServices/VeranstaltungsVerzeichnis/Pruefungsordnungen_EN.aspx
- Academic Schedule shows the specialization courses offered in a semester:
<https://elearning.uni-erfurt.de/course/view.php?id=2701>
- Older Academic Schedules on WBS website:
<https://www.uni-erfurt.de/en/brandtschool/studies/current-students/academic-schedules>

**UNIVERSITÄT
ERFURT**

Willy Brandt School
of Public Policy

International and Global Public Policy

Andreas Goldthau

**UNIVERSITÄT
ERFURT**

Willy Brandt School of Public Policy

International & Global Public Policy

Professor Andreas C. Goldthau

Franz Haniel Chair for Public Policy, Brandt School

International and Global Public Policy

Global Policy Networks

Transnational
policy-making

Social & Non-
State Actors

Public-private
partnerships

Global Public Policy

Public & private
regulation

Global Public
Goods

The Commons

Geoeconomics

Who's teaching on the specialization?

- Global energy policy: decarbonisation of the energy system & transitions towards renewable energies
 - Global environmental & climate governance
 - International conflict
 - Global health policy



Research Institute for Sustainability
Helmholtz Centre Potsdam



A selection of IGPP seminars on offer this year

| | |
|--------------------|--|
| Collins Adeyanju | Global Public Health |
| Priscilla Boatemaa | Social Network Analysis |
| Hasnain Bokhari | Advanced Data Analytics |
| Andreas Goldthau | Global Energy Policy |
| Oliver Kessler | The Rise of Geoeconomics |
| Mariana Llanos | Democratic Institutions and Institutional Change. Comparative Perspectives from the Global South |

See you in class!

Professor Andreas C. Goldthau

Director, Willy Brandt School of Public Policy
Franz Haniel Chair for Public Policy, University of Erfurt

**UNIVERSITÄT
ERFURT**

Willy Brandt School
of Public Policy

Non-Profit Management and Social Entrepreneurship

Heike Grimm

■ ■ ■

SOCIAL ENTREPRENEURSHIP AND NON-PROFIT MANAGEMENT SPECIALIZATION

■



WHY NON-PROFIT MANAGEMENT?

- ❖ Equips individuals to make a meaningful impact on society.
- ❖ Prepares students to lead and manage mission-driven organizations.
- ❖ Develops skills in strategic planning, fundraising, leadership, and impact measurement.
- ❖ Ideal for those passionate about creating social change and leading non-profits.
- ❖ Students who aim to work in the non-profit sector train their entrepreneurial, creative, innovative and independent thinking.



WHY SOCIAL ENTREPRENEURSHIP (in a Public Policy Program)?

- ❖ **Innovative Approaches:** Integrating social entrepreneurship into public policy programs equips students with creative solutions for complex social challenges.
- ❖ **Positive Societal Impact:** Social entrepreneurs leverage business models to address pressing issues such as poverty, education, and sustainability.
- ❖ **Blending Disciplines:** The combination of entrepreneurial thinking and public policy enables students to develop scalable and sustainable solutions.
- ❖ **Interdisciplinary Learning:** This approach encourages creativity and strategic thinking among students.
- ❖ **Collaborative Change:** Students gain a deeper understanding of how policy and entrepreneurship can work together to drive social change effectively.



Social Business Model Canvas

| | | | | |
|---|--|---|--|---|
| <p>Key Resources</p> <p><i>What resources will you need to run your activities? People, finance, access?</i></p> | <p>Key Activities</p> <p><i>What programme and non-programme activities will your organisation be carrying out?</i></p> | <p>Type of Intervention</p> <p><i>What is the format of your intervention? Is it a workshop? A service? A product?</i></p> | <p>Segments</p> <p>Beneficiary</p> | <p>Value Proposition</p> <p>Social Value Proposition</p> <p>Impact Measures</p> <p><i>How will you show that you are creating social impact?</i></p> |
| | | <p>Channels</p> <p><i>How are you reaching your beneficiaries and customers?</i></p> | <p>Customer</p> <p><i>Who are the people or organisations who will pay to address this issue?</i></p> | <p>Customer Value Proposition</p> <p><i>What do your customers want to get out of this initiative?</i></p> |
| <p>Partners + Key Stakeholders</p> <p><i>Who are the essential groups you will need to involve to deliver your programme? Do you need special access or permissions?</i></p> | | <p>Surplus</p> <p><i>Where do you plan to invest your profits?</i></p> | | <p>Revenue</p> <p><i>Break down your revenue sources by %</i></p> |
| <p>Cost Structure</p> <p><i>What are your biggest expenditure areas? How do they change as you scale up?</i></p> | | <p>Revenue</p> <p><i>Break down your revenue sources by %</i></p> | | |

Inspired by The Business Model Canvas

COURSES



- NGO Management
- Sustainable Development
- Corporate Social Responsibility and Sustainable Impact
- Governance and Human Rights
- Digital Threats to Democracy
- AI and its Impact on Civil Society



- Social Entrepreneurship
- Public Services for Public Value
- Understanding Corruption and Promoting Anti-Corruption Efforts
- Social Innovation Management
- Well-being for Social Change
- Cybersecurity

PARTNERS AND SUPPORTERS



- Transparency International
- International Civil Society Centre
 - Welthungerhilfe
 - Doctors Across Borders
 - OECD
 - Worldbank
- Federal Ministry of Education and Research
 - Engagementpreis Foundation
 - BMW Foundation
- And many other local, national and international partners ...



RESEARCH FOCUS

Aletta Haniel
Research Team

**Social
Entrepreneurial
Activity and Impact**

**Social
Innovation**

**Public Policy
Research in the
Global South**

**Public and Policy
Entrepreneurship**

**Anti-
Corruption
Policies**

Leadership



SPECIALIZATION LEAD



Prof. Dr. Heike Grimm

Aletta Haniel Professor

for Public Policy and Entrepreneurship

Email: heike.grimm@uni-erfurt.de

**Journal of Entrepreneurship and Public
Policy**

Editor-in-Chief

<https://www.emeraldgrouppublishing.com/journal/jep>

➤ **Public Policy Research in the Global South and North**

➤ High-quality articles and cases focusing on the relationships among public policy and (social) entrepreneurship, and (economic) development, either / or all three areas, **are welcome.**



TEAM MEMBERS



Kathrin Eisenhauer
Secretary



Priscilla B. Appiah
Research Associate



Edris Arib
Doctoral Researcher



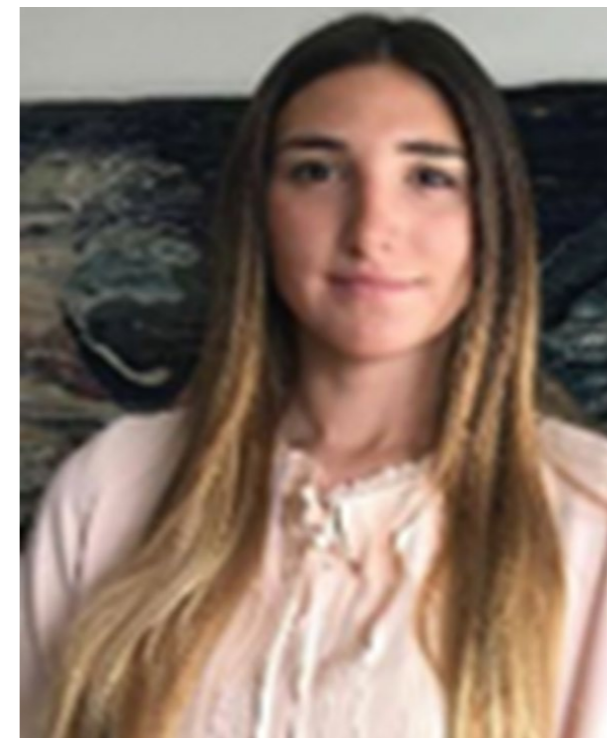
TEAM MEMBERS



Mohamed Azouz Rebai
Doctoral Researcher



Idowu Adeyemi
Student Assistant



Maria Florencia Otero
Editorial Office Manager

**UNIVERSITÄT
ERFURT**

Willy Brandt School
of Public Policy

Conflict Studies and Management

Alejandra Ortiz-Ayala

**UNIVERSITÄT
ERFURT**

Willy Brandt School
of Public Policy

Welcome!

CONFLICT STUDIES AND
MANAGEMENT SPECIALIZATION

Winter 2024-2025



Dr Alejandra Ortiz-Ayala

I'm currently research associate and head of conflict and conflict management specialization at the Willy Brandt School of Public Policy

I'm from Colombia, Political Scientist and I did my PhD in Peace and Conflict Studies.

Appart from teaching.

Collaborate with academics and prationers in NZ, Europe and Latin America.

Research Interest:

<https://sites.google.com/view/alejandraortizayala/welcome>

People assigned to the specialization.



Prof. Dr. Sophia Hoffmann

Junior Professor for international politics and conflict studies. University of Erfurt. Prof. Dr. Hoffmann is currently particularly interested in intelligence services and their role as important hubs for international activities.



Dr. Jasmin Lorch

Postdoctoral Fellow. Dr Lorch has researched and published widely on the role of civil society in weak states and in processes of democratization and autocratization. She has also written extensively about Islamism, political Salafism, and secular-Islamist relations in South- and Southeast Asia and the Maghreb



Dr. Siddharth Tripathi

Dr. Siddharth Tripathi is a Postdoctoral Fellow at the Department of International and Security Affairs at Konrad Adenauer Stiftung, Berlin. His primary interest lies in non-western perspectives in IR and peace and conflict studies.

People assigned to the specialization.



Dr. Piro Rexhepi

Researcher who works on decoloniality, sexuality and Islam. 2022 White Enclosures: Racial Capitalism and Coloniality Along the Balkan Route, Book Manuscript, Duke University Press.



Dr. Jalale Getachew Birru

Doctor from the Willy Brandt School of Public Policy, University of Erfurt, under the DAAD Graduate School Scholarship Program (GSSP): Managing Fragility- Critical Perspectives on Good Governance.

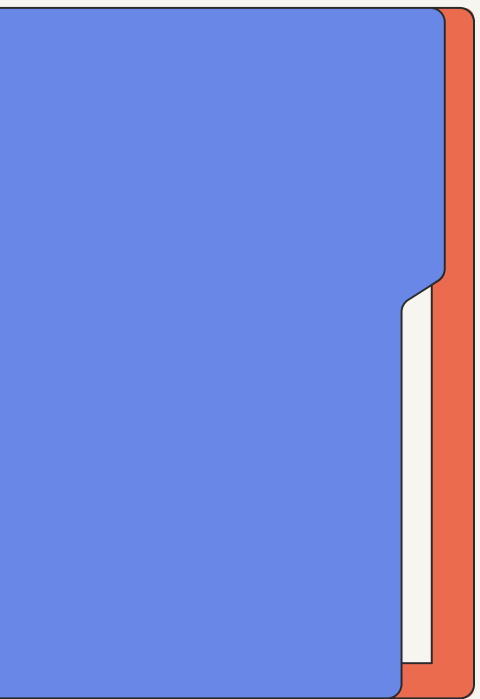
People assigned to the specialization.

Aline Mugisho

Doctoral candidate at the Willy Brandt School of Public Policy, University of Erfurt, Her current doctoral research focuses on Gender, Resilience and Politics of Protection in Conflict societies with a particular focus on Great Lakes Region. Her research interest include: Public Policy; Politics of Reconstruction in Post-Conflicts; Research Methods in Conflict; Transitional Justice; Gender, Migration and Integration; Social Cohesion and Diaspora Dynamics.

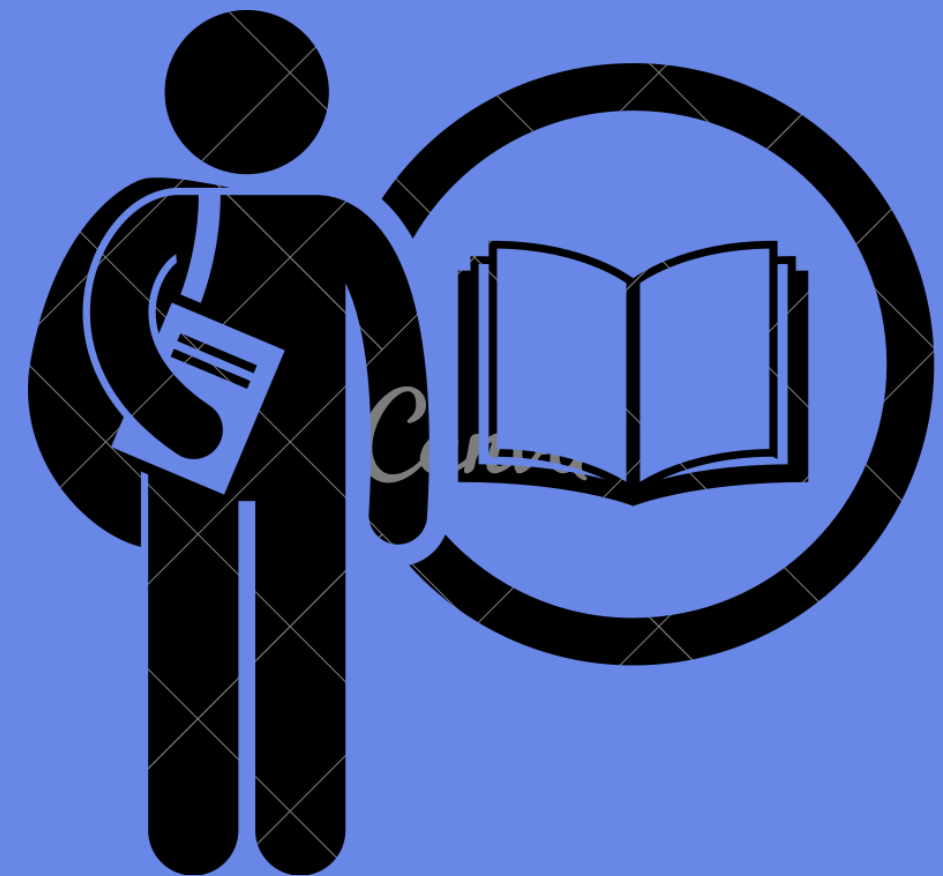
Specialization Overview

- Following an interdisciplinary and application-oriented perspective **we go beyond the causes and effects of direct violence**, and we further interrogate how public policy address **structural violence in different latitudes**.
- The specialization acknowledges the interdependences among different regions and the importance of considering different levels of analysis such as the **international, national, and subnational for the understanding and prevention of direct and indirect violence** and issues like **social justice, food security, cybersecurity, climate change, migration, development, among others**.
- We also acknowledge the legacies of violent conflict, and the challenges that societies face even after direct conflict ends.



- **Gender, Peace, and Conflict**
- **Democratic Institutions and Institutional Change.
Comparative Perspectives from
the Global South**
- **Social Network Analysis**

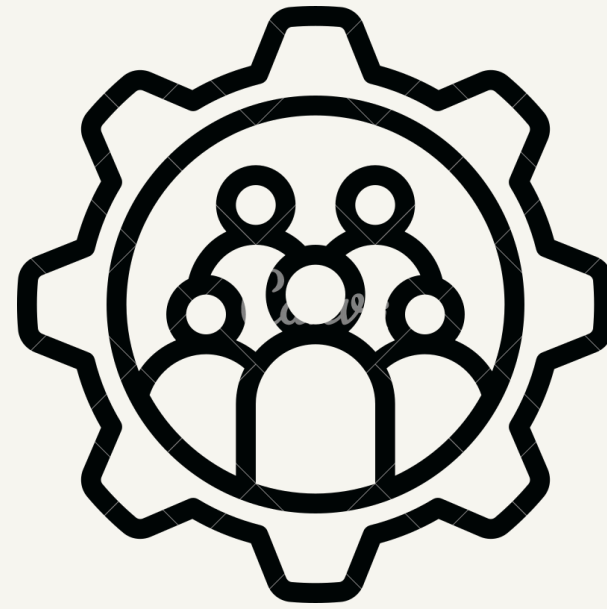
Courses



- Forced Migration Policies in Comparative Perspective
 - Race, Racism & Global International Relations
- Justice and Reconciliation in Post-Conflict Societies
 - The Research Lens on Public Policy Intervention and Evaluation
- Intelligence Agencies and International Relations

Courses





Introduction to Conflict Studies and Management

Introduction to Conflict Studies and Management links scholarship to practice and challenges students to develop their knowledge into critical ways of thinking and behaving as potential policy designers and advisers in the field.

Despite that the course is focusing mostly on direct violence in conflict zones, often located in the so called “global south” countries. The lecturer would bring questions and discussions about others forms of violence beyond those contexts.

Contact Me

Email Address

alejandra.ortiz-ayala@uni-erfurt.de

Maternity leave

**UNIVERSITÄT
ERFURT**

Willy Brandt School
of Public Policy

Thank You!

**UNIVERSITÄT
ERFURT**

Willy Brandt School
of Public Policy

Development and Socio-Economic Policies

Evans Tindana Awuni

Gerhard-Haniel Chair



**Prof. Dr.
Achim Kemmerling**

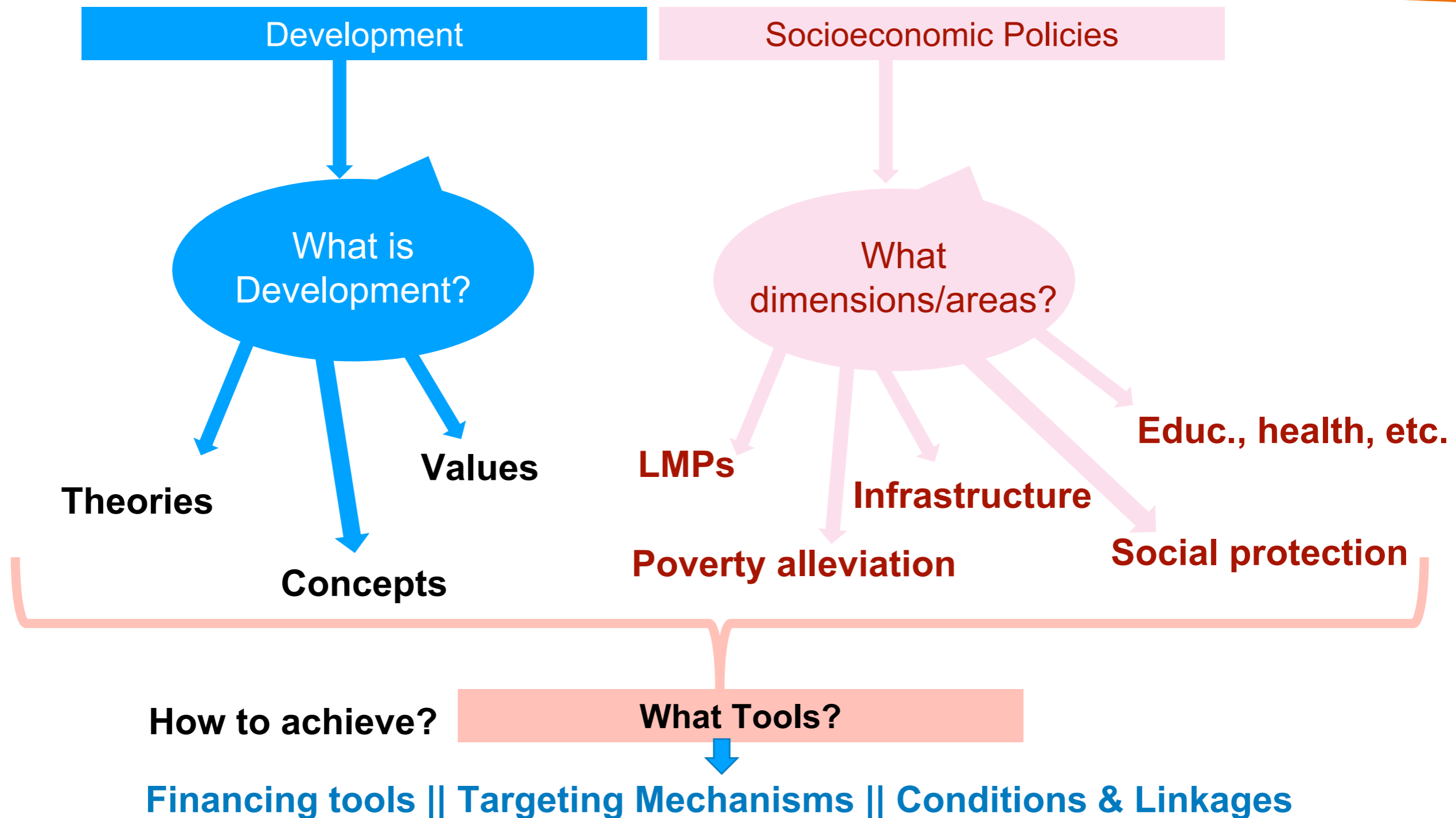
Gerhard Haniel Professor for Public Policy
and International Development

- **Political Scientist
(Economist)**
- **Research:**
 - Effectiveness and emergence of social policy (incl. tax and labour market policy)
 - Linking development and social policy issues
- **Practice:**
 - Cooperation e.g., with Myanmar, Indonesia and Colombia
 - Consulting for GIZ and DEval. among others

People



Aim of Specialization



Courses

Winter Semester

- Political Economy of Development (Andrew)
- Cities and Urban Governance in the Global South (Gift)
- Macroeconomics I (Sebastian Rütth/Christian OCHSNE, StaWi)

Summer Semester

- How to Make Aid Smarter? (Achim & Evans)
- Policies against Poverty & Inequality (Achim & Evans)
- Stay tuned...!

Ongoing Research Projects

UNIVERSITÄT
ERFURT

Willy Brandt School
of Public Policy

POLDIGWORK

Politics and the Future of Work in Middle-Income Countries

UNIVERSITÄT
ERFURT

Willy Brandt School
of Public Policy

3 Country Case Studies



Mexico



Indonesia



South Africa

Project Leader: Prof. Achim Kemmerling
Willy Brandt School of Public Policy, University of Erfurt
Achim.kemmerling@uni-erfurt.de



4 Forms of Technological Change

Automation/Robotization,
Gig Work/Platform Economy,
Artificial Intelligence,
New Forms of Work (online)

3 Policy Areas

Social Policy,
Labour Market Policy & Regulation,
Labour Taxation

5 Sectors

Manufacturing,
Services (office workers),
Services (personal and social),
Informal Sector Workers,
Government Sector

4 Types of Data

Public Opinion,
Interviews,
Content Analysis,
Country Case Studies

Read more about PolDigWork here:

<https://www.uni-erfurt.de/en/brandtschool/research/research-projects/politics-and-the-future-of-work-in-middle-income-countries-poldigwork>

Others:

- Politics and the Future of Work in Financing Social Security
- How important is inequality to ODA donors?
- Qualitative Evaluation Methods

Questions

?

Find out more on our website

UNIVERSITÄT
ERFURT

Willy Brandt School
of Public Policy

UNIVERSITÄT
ERFURT
Willy Brandt School
of Public Policy

Searchterm



A-Z

Quicklinks

Deutsch

The School

Studies

Research

Media & Events

[Homepage](#) > [Brandt School](#) > [Research](#) > [Research Areas](#) > [Development and Socio-Economic Policies](#)

Research Areas

[Global Public Policy](#)

[Development and Socio-Economic Policies](#)

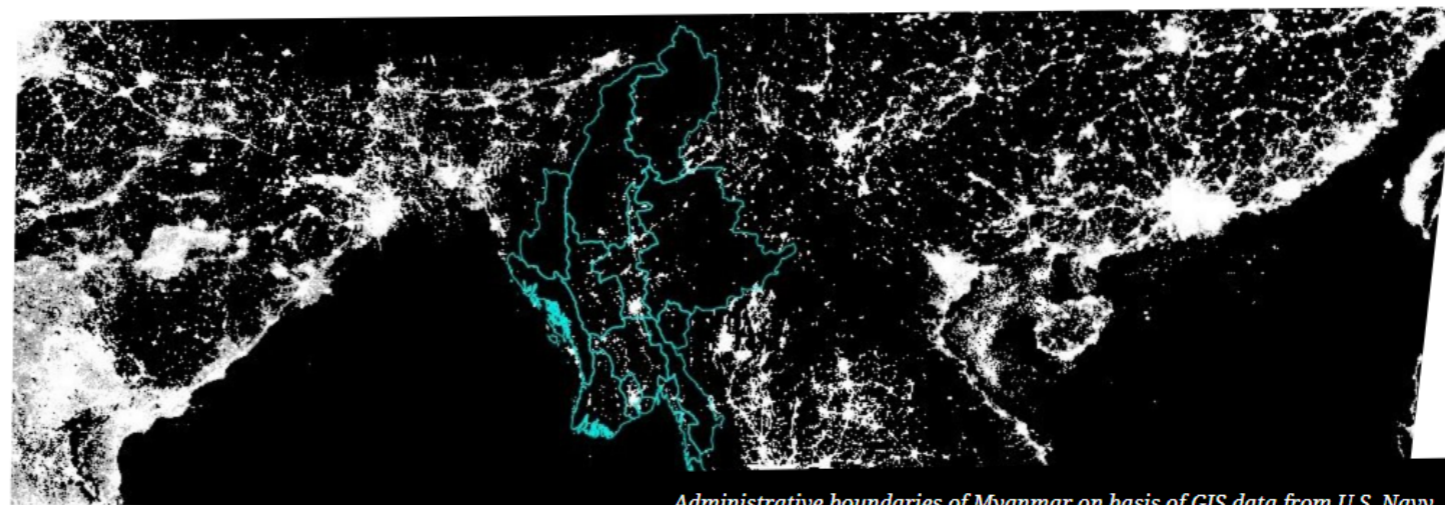
[Conflict Studies and Management](#)

[Entrepreneurship and Public Policy](#)

[Democratic Institutions in the Global South](#)

[Methods of Public Policy](#)

Development and Socio-Economic Policies



Administrative boundaries of Myanmar on basis of GIS data from U.S. Navy

Read more here: <https://www.uni-erfurt.de/en/brandtschool/research/research-areas/development-and-socio-economic-policies>

Specialization:

Development and Socio-Economic

Evans Awuni

WS 2024-2025

Master of Public Policy Orientation Week 2024

(as of Oct. 4, 2024)



mandatory

optional

| | Monday, (Oct. 7) | Tuesday, (Oct. 8) | Wednesd., (Oct. 9) | Thursd., (Oct. 10) | Friday, (Oct. 11) |
|-------------|--|--|---|--|--|
| 08.00-09.00 | Meeting Point 08.40 @ Uni entrance | | City Registration 07.30- 10.00 @ Uni entrance | | City Registration 07.30- 10.00 @ Uni entrance |
| 09.00-10.00 | MPP Welcome Session 09.00 - 11.00 @ C19.00.02 | Consultation Hour: Florian Heintze 09.00 - 11.00 @ C19.02.01 | | | |
| 10.00-11.00 | | | Consultation Hour: University Accounts 10.00 - 12.00 @ C19.00.02 | | |
| 11.00-12.00 | Campus Tour 11.00 - 12.00 | StuRa Introduction 11.20 - 12.00 - KIZ/ HS 2 | | Helmut Schmidt Programme (Meeting) 11.00- 12.00 @ C19.00.02 | Academic Life 11.00- 13.00 @ C19.00.02 |
| 12.00-13.00 | | Introduction to the MPP Program 12.00 - 14.00 @ C19.00.02 | | | |
| 13.00-14.00 | | | | | |
| 14.00-15.00 | Info on Health Insurance 14.00-16.00 @ C19.00.02 | | Student Life at Brandt School 14.00-16.30 @ C19.00.02 | MPP Specializations 14.00- 15.00 @ C19.00.02/hybrid | |
| 15.00-16.00 | | International Offers 15.00 - 16.00 @ HS 7 | | | Welcome City Tour 14.40- 18.00 @ Domplatz Nord |
| 16.00-17.00 | Welcome Get Together (StuRa) 16.00 - Open End @ On Campus | | | | |
| 17.00-18.00 | | | | | |
| 18.00- | | MPP Get Together (Stud. Gov.) 20.00 - open end @ Café Nerly | Pub Crawl (StuRa) open end @ t.b.a. | Pub Crawl (StuRa) open end @ t.b.a. | BBQ (Stud. Gov.) 18.00- open end @ Uni Campus |



Further Activities and Events

mandatory

optional

Sunday, October 13: Trip to Weimar "Zwiebelmarkt" (10.00-16.00, @ t.b.a.)

Monday, October 14: Tentative: City Registration (07.30-10.00, @ Uni entrance)

Tuesday, October 15: Consultation hours: Setting Up University Accounts (14.00-16.00, @ C19.00.02)

Friday, November 1: Diversity workshop pt. 1

Tuesday, November 5: Consultation hours: ELVIS Course Registration (14.00h, @ C19.00.02)

Wednesday, November 6: Welcome Lecture (18.00-20.00, @ C19.00.02)

Thursday, November 7: Consultation hours: ELVIS Course Registration (10.00h, @ C19.00.02)

Wednesday, November 13: Internship Info Session (14.00-16.00, @ t.b.a.)

Thursday, November 28: Diversity workshop pt. 2

The logo of the University of Erfurt, featuring the text 'UNIVERSITÄT ERFURT' in white on a black background, with 'Willy Brandt School of Public Policy' in orange below it. The logo is set within a white circle on a black background.

**UNIVERSITÄT
ERFURT**

Willy Brandt School
of Public Policy

Thank you for your attention!

Contact:

Office C19.02.40

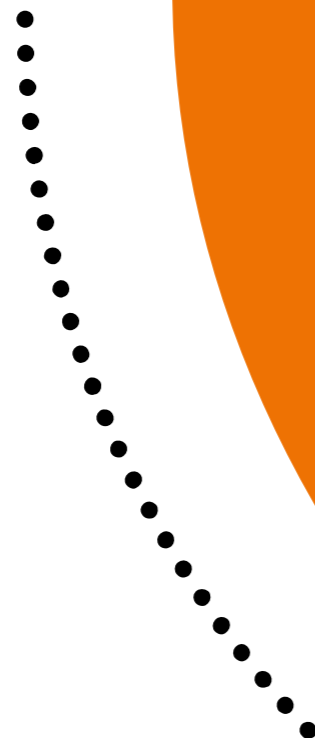
✉ **jenny.wagner.01@uni-erfurt.de**
christian.tischmeyer@uni-erfurt.de

☎ **+49 (0) 361 737-4642**
+49 (0) 361 737-4643

usu. Mo-Fr 9 to 14h



More info?



publicpolicy@uni-erfurt.de



[@brandtschool.de](https://www.instagram.com/brandtschool.de)



[@brandtschool](https://www.x.com/brandtschool)



[linkedin.com/school/brandtschool](https://www.linkedin.com/school/brandtschool)



[@brandtschool](https://www.youtube.com/@brandtschool)



[@brandtschool](https://www.facebook.com/brandtschool)

**Check out our
website!**



brandtschool.de